

THE INDUSTRIAL RISK

USEFUL INFORMATION IN CASE OF
INDUSTRIAL ACCIDENT



ENG VERSION



Comune di Montecchio Maggiore
Assessorato alla Protezione Civile



Prefettura di Vicenza
Ufficio Territoriale del Governo



Fabbrica Italiana Sintetici



THE INDUSTRIAL RISK

USEFUL INFORMATION IN CASE OF
INDUSTRIAL ACCIDENT

MEANING...

SELFPROTECTION

Behaviours lowering the probability of damages during industrial accidents.

SERIOUS ACCIDENT

Industrial accident potentially seriously damaging human health or the environment, either immediately or later on.

EXTERNAL EMERGENCY PLAN

Emergency plan prepared by the Prefecture to face a serious industrial accident.

INTERNAL EMERGENCY PLAN

Internal emergency plan to face an industrial accident inside the factory.

BATCH PRODUCTION

A manufacturing process in which components or goods are produced in groups (batches) and not in a continuous line.

INDUSTRIAL RISK

Risk originated by technological or industrial accidents, which might cause the loss of life or injury, property damage, social, economic or environmental degradation.

ATTENTION AREA

Area where some effects can occur but they cannot cause heavy damages.

DAMAGE AREA

Area where the effects could be serious, particularly for some categories of people (children, the elderly or sick people).

MOST DANGEROUS AREA

Area where the accident causes the greatest damages with a high risk of death.

WHY IS THERE A MAJOR INDUSTRIAL RISK?

There are two factories in the town of Montecchio Maggiore that are classified “high level hazard for industrial accident “(legislative Decree 105/15).

F.I.S. Fabbrica Italiana Sintetici Ecogas (ex Missilgas)

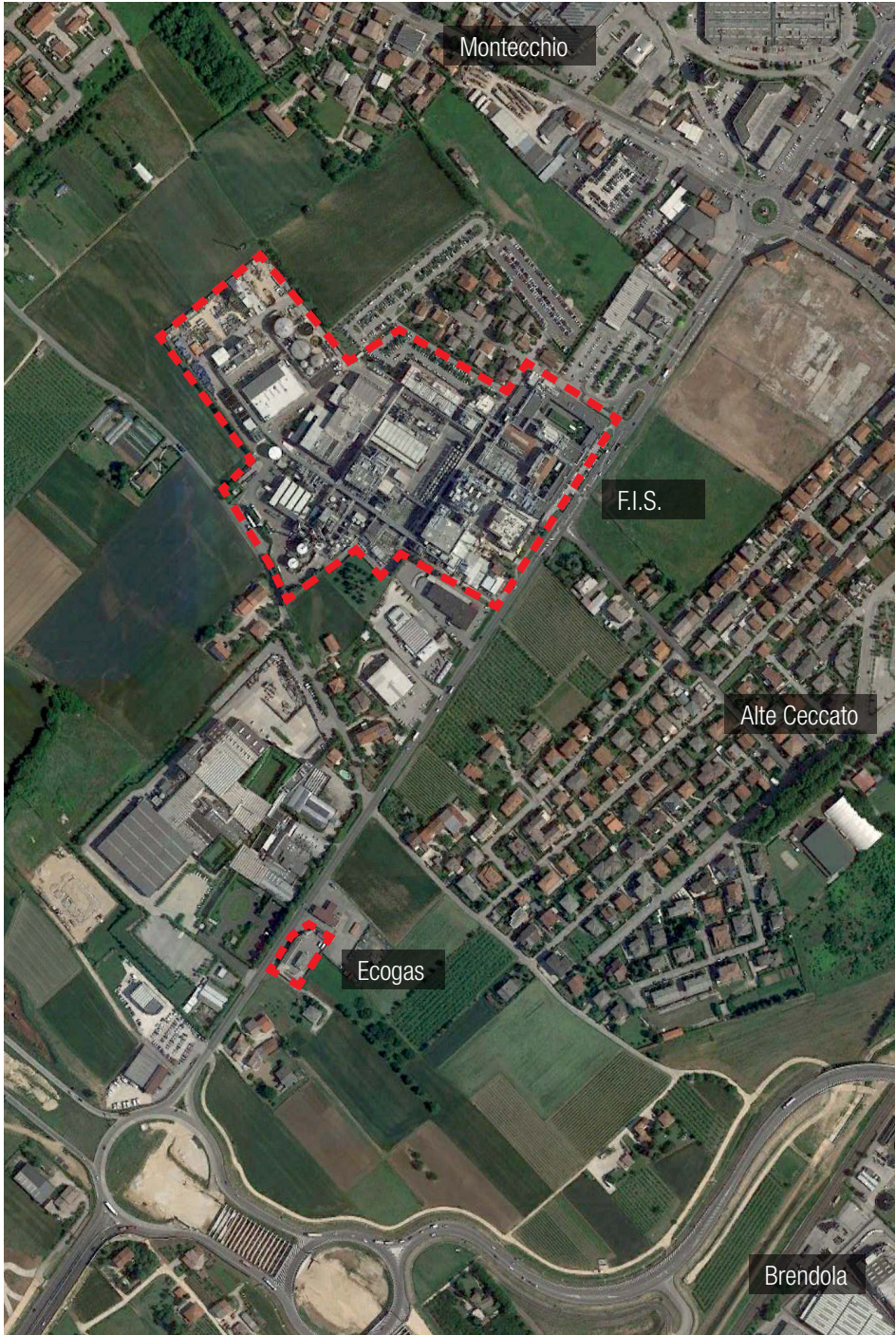
Both are placed in Viale Milano, Alte Ceccato hamlet.

The Mayor has to inform citizens about risks of these activities and give advice on how to react in the event of so big accidents to cause external impact. In this booklet you can find some useful suggestions to face such events thus lowering damages for people and things.

ABOUT COMPANIES

F.I.S. Fabbrica Italiana Sintetici:
Viale Milano, 26
Alte di Montecchio Maggiore

Ecogas:
Viale Milano, 27
Alte di Montecchio Maggiore



Montecchio

F.I.S.

Alte Ceccato

Ecogas

Brendola



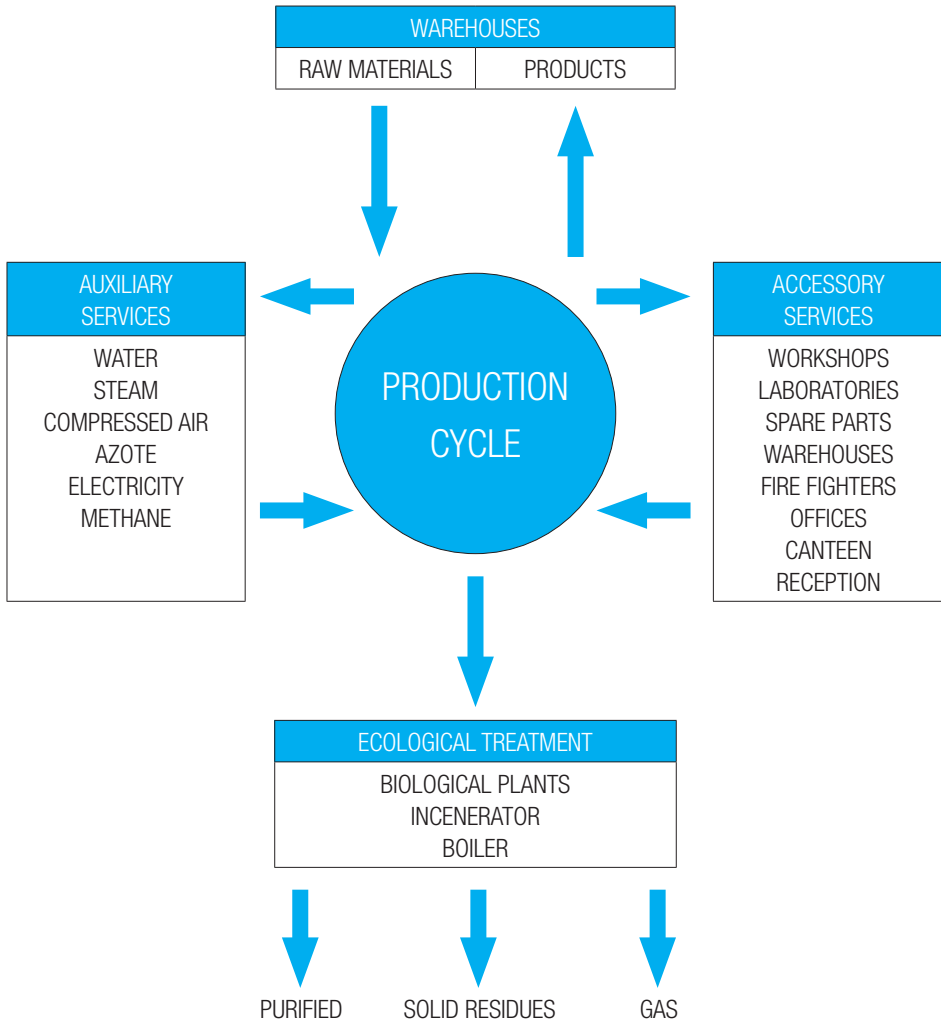
Fabbrica Italiana Sintetici

F.I.S. Fabbrica Italiana Sintetici is a private Italian company that specializes in API production. Custom Synthesis is our core business, which means the exclusive production of intermediates, advanced intermediates and APIs for pharmaceutical companies who will own the NDA. F.I.S. has the capability to provide a wide array of integrated services to the customer, including process research and development, optimization, and scale-up facilities to support both validation and commercial launch. F.I.S. also develops and sells a wide range of Generic APIs including anxiolytics, anticonvulsants, antidepressants, analgesics, anti-inflammatory agents, antibacterials, antifungals, cardiovascular drugs, and diuretics. (see our product lists in the Products & Services page).

The Montecchio plant is classified as high accident risk in compliance with Italian Legislative Decree 105/2015 with the obligation of presenting Notification and Safety Reports to the competent Authorities. The risks have been identified, prevention and safety measures applied to reduce the possibility of accident to a minimum. A periodic check program has been started and a plan for facing possible emergency situations (Internal Emergency Plan) has been prepared. The staff is consistently formed and trained. Advices for drawing up an External Emergency Plan has been supplied to the competent Authorities.

In 2001 FIS received ISO 14001 environmental certification for its Environment Management System. It guarantees the existence of a management system able to constantly improve performance in this field and prevent and forecast new requirements and/or solutions for any manufacturing environmental problem.

In 2009 FIS also obtained BS OHSAS 18.001 certification for its Health and Safety Management System.





ECOGAS S.p.A. (Ex Missilgas)

The factory features a commercial business by receiving, stocking and distributing LPG. LPG in stock is not over 67,5 tons. In the store there is only one tank, and one transfer point for incoming and outgoing LPG tank trucks. The transfer point has a rain fire plant and a gas detectors system with sound alarm. The whole area is surrounded by a 3 meters tall wall. In case of gas loss the detectors will disconnect electricity, activate rain fire plant, interception valves on the transfer lines will close, firefighting motor pump would be activated and a water barrier will be created which protects the entry passage to the plant. This barrier limits leaks coming from the gas mixture deposit.

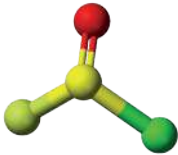
To comply with the activities provided by the “safety Management System”, the company constantly trains its staff to minimize the occurrence of accidents and runs a periodic training program to conform to the procedures in order to make the deposit safe correctly and quickly. The Company carries out controls and periodic preventive maintenance for every component of the plant on a quarterly, halfyearly, yearly and decennial schedules.

WHO IS IN CHARGE OF HANDLING EMERGENCIES?



TYPE OF ACCIDENT

RELEASE OF TOXIC SUBSTANCE



SOCl₂ **THYONIL CHLORIDE**

The cloud could extend and cause damage up to 70 meters from the plant perimeter.



CORROSIVE



IRRITANT/HARMFUL



NH₃ **AMMONIA**

The cloud could extend and cause damage up to 15 meters from the plant perimeter.



CORROSIVE



TOXIC



ENVIRONMENTALLY
DAMAGING

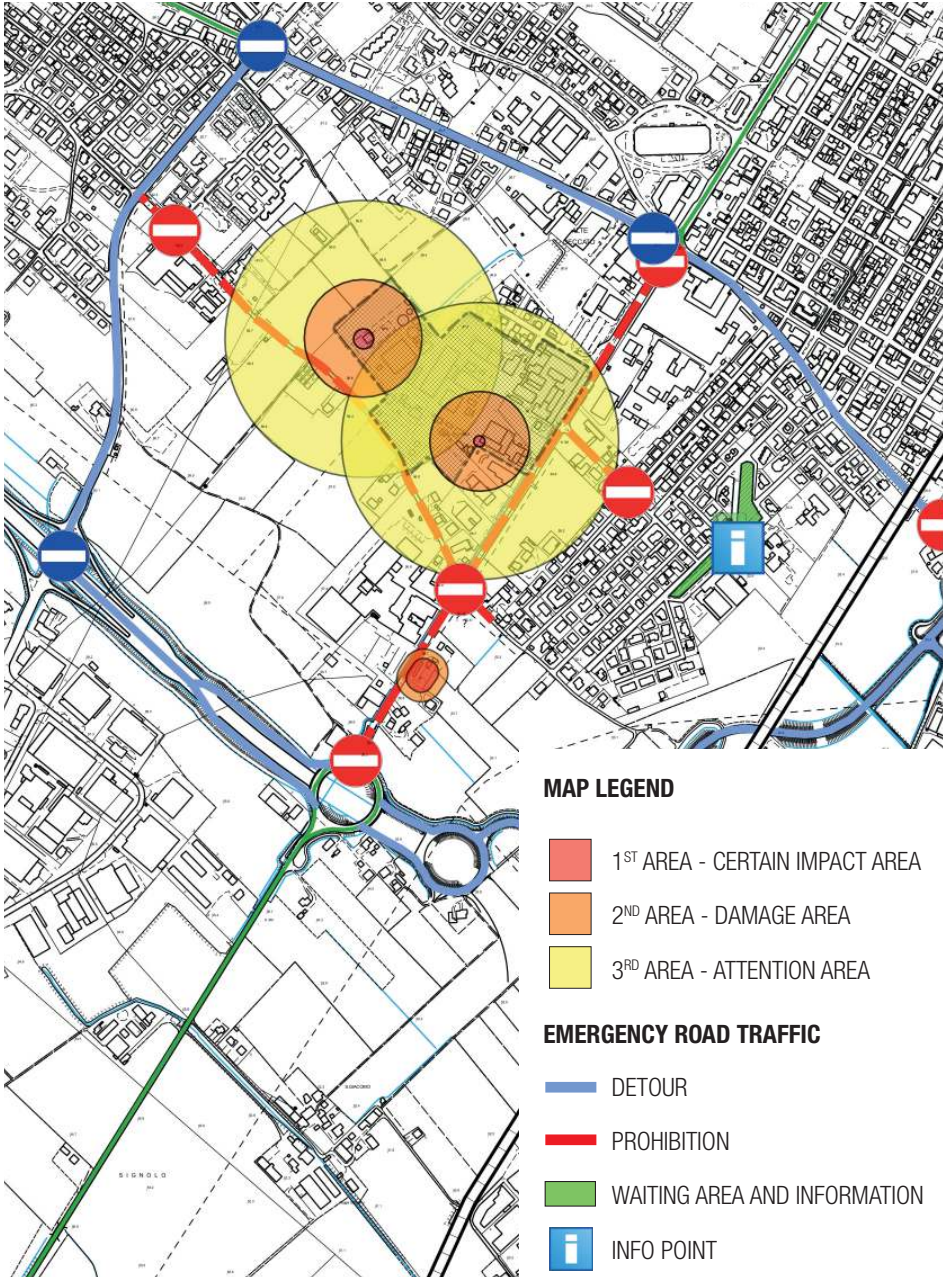
FIRE EXPLOSION OF LPG

(Liquid petroleum gas flammable mixtures of hydrocarbon gases)



FLAMMABLE

Attention area could be as wide as 20 meters from site perimeter. The risk of damage is mainly for outside people. No risk for indoor people, they are already protected.



WARNING! BY SERIOUS ACCIDENT ROADS MAY BE CLOSED OR REDIRECTED. PLEASE, MOVE ONLY IF IT IS STRICTLY NECESSARY!

WARNING SYSTEM

WHO WARNS ME



Warning SMS

if you are registered to the service for workers and residents in the damage and attention areas (orange and yellow areas).



Radio Stella radio bulletins

frequency FM 97.200 97.400



Led Panels messages

(Via Battaglia, San Vitale and Viale Trieste)



Web sites

Town of Montecchio Maggiore
www.comune.montecchiomaggiore.vi.it

Comitato Volontario
Protezione Civile Montecchio Magg.
www.pcmontecchio.it



SMS SERVICE



For who?

Residents and workers within the impact and attention area.



How to activate it?

download from web site of
Comune di Montecchio Maggiore Rischio Industriale
www.comune.montecchiomaggiore.vi.it/content/view/1711/1847/



Sent to

protezionecivile@comune.montecchiomaggiore.vi.it

SELFPROTECTION



Stay inside and if you are outdoor, come indoor.
Close doors and widows.



If you have children at school, don't go out to pick them up.
Teachers know how to care for them.



Use the telephone only if it is absolutely necessary.



Go to the farthest room from the industrial plant or where there are
windows which don't face to the plant.



Don't use free flames or smoke.



Don't use elevators.



Turn fans and air conditioning off.



Use insulating tape or wet cloths to seal off windows, door chinks and air inlets.



If you are in the bathroom, keep the shower open to wash the internal air away.



If you smell a strong odour or if your skin feels irritated, place a damp cloth in front of your nose and mouth and wash your eyes.



Listen broadcast message (Radio Stella FM Mhz. 97.297.4)
or visit website:

Comune di Montecchio Maggiore: www.comune.montecchiomaggiore.vi.it
Comitato Volontario Protezione Civile Montecchio: www.pcmontecchio.it



When the alarm is over: open windows and doors to ventilate the indoor areas. Be careful to accessing basements or halfbasements where vapor can stagnate.

IF YOU ARE TOLD TO EVACUATE



Keep calm, take your documents with you, your keys to lock home, take the medicines you need for you or for you relatives who live with you.



If it is possible keep a damp hanky over your mouth and nose.



Do not use elevators.



Do not use vehicles; they will only cause traffic jams and get in the way of the emergency vehicles.



Abandon the area, following the Authority's instructions.



Follow the marked route.



Move to the meeting point specified by the authorities.



Carry a radio for news (it is sometime built in your mobile phone).



Do not pick children up from school:
they are protected and their teachers know how to look after them.



FOR ANY FURTHER INFORMATION PLEASE REFER TO:
UFFICIO PROTEZIONE CIVILE DEL COMUNE DI MONTECCHIO MAGGIORE.
TEL. 0444 705711
E-MAIL: protezionecivile@comune.montecchiomaggiore.vi.it



THE INDUSTRIAL RISK

USEFUL INFORMATION IN CASE OF
INDUSTRIAL ACCIDENT